

# OPTIONS

RESIDENTIAL ELEVATORS

CAMBRIDGE  
ELEVATING INC.

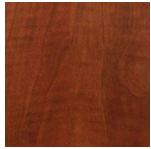
181 Shearson Crescent, Cambridge, ON N1T 1J3  
TOLL FREE 1-800-265-3579 | F 519-653-9927 | [www.CambridgeElevating.com](http://www.CambridgeElevating.com)

# CAB FINISHES

## CAB FINISHES

1.  MDF – MEDIUM DENSITY FIBERBOARD

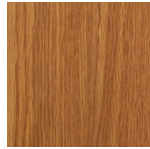
2.  MELAMINES



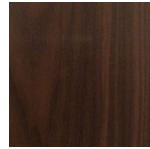
Cherry



Maple



Oak



Walnut

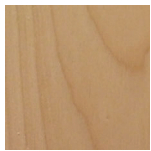


White

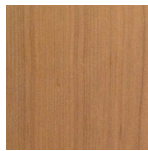


Black

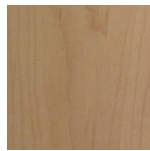
3.  UNFINISHED HARDWOOD VENEERS



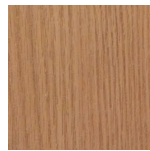
Birch



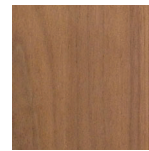
Cherry



Maple



Oak

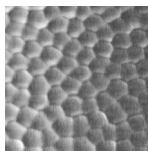


Walnut

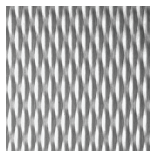
4.  STAINLESS STEEL



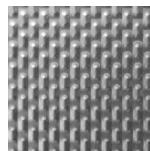
No.4 Brushed



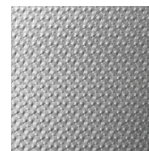
1HM Dimple



5WL Granular



4LB Mirage

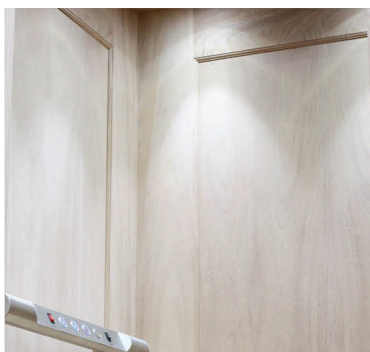


3ND Speckle

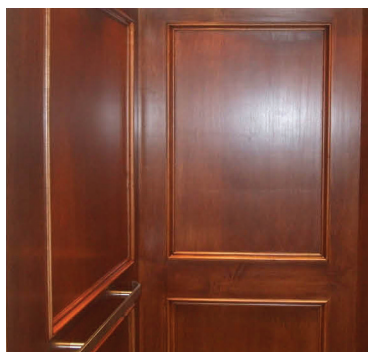


6SL Stripe

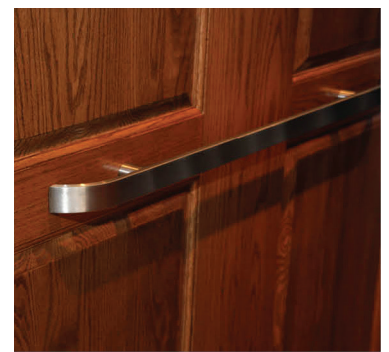
5.  RAISED/RECESSED HARDWOOD – (OPTIONAL) Available in Cherry, Maple, Oak and Walnut (Custom Available)



Recessed Single-Panel



Recessed Two-Panel



Raised Four-Panel

6.  ADD 4-STEP CLEAR-COAT FINISH TO # 3 UNFINISHED VENEERS, OR #5 HARDWOOD FACE FRAME.



# HARDWARE & LIGHTING

## CALL STATIONS



**CALL STATION**  
(Standard)



**DIGITAL POSITION INDICATOR CALL STATION (DPI)**



**HANDS-FREE "WAVE" CALL STATION**



**NUMERIC KEYPAD CALL STATION**

## LIGHTING



**LOW VOLTAGE LED LIGHTS**  
(Standard) 2 or 4 by model/size

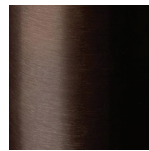


**LOW VOLTAGE LED LIGHTS**  
Set of 6 LED pin spotlights

## FIXTURE FINISHES (HANDRAIL, CALL STATIONS, C.O.P.)



**STAINLESS STEEL**  
(Standard)



**OIL RUBBED BRONZE**



**ANTIQUÉ BRASS**



**ANTIQUÉ NICKEL**

## HANDRAIL OPTIONS

Available in 36", 42", and 48" and custom lengths



**1.5" FLAT**  
(Standard)



**3" FLAT**



**2" DIAMETER CYLINDER**



**1.5" FLAT WITH CURVED ENDS**



**3" FLAT WITH CURVED ENDS**



**2" DIAMETER CYLINDER WITH CURVED ENDS**

# GATES, DOORS & CAR OPERATING PANELS

## CAR OPERATING PANELS



- STANDARD CAR OPERATING PANEL  
Included

## DOORS AND ENTRANCES

### ● ACCORDION CAB GATE (ELMIRA MODEL ONLY)



- SOLID VINYL ACCORDION GATE (Standard)
- VISIFOLD CLEAR OR BRONZE
- HYBRID
- ALUMINUM SOLID OR PERFORATED

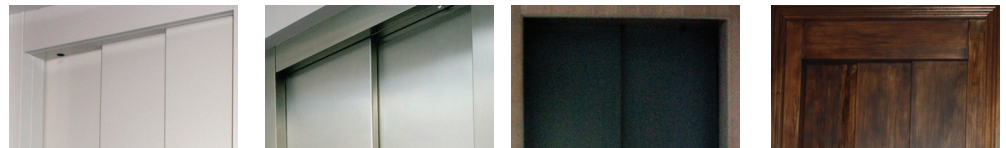
### AUTOMATIC ACCORDION CAB GATE OPERATOR (ELMIRA MODEL ONLY)

### ● AUTOMATIC SLIDING CAB DOOR PANELS (HERITAGE & CAMBRIAN MODELS)



- BEIGE EPOXY (Standard)
- STAINLESS STEEL
- CUSTOM
- UNFINISHED WOOD VENEER

### ● AUTOMATIC SLIDING LANDING ENTRANCES (CAMBRIAN MODEL ONLY)



- BEIGE EPOXY (Standard)
- STAINLESS STEEL
- (FRAMELESS) BY OTHERS
- CUSTOM

## CAB HEIGHT CHOICES

- 84"  96"  CUSTOM HEIGHT CAB

## CAB DOOR HEIGHT CHOICES

- 78-3/4"  84"  96"

## ACCESSORY OPTIONS

- SABBATH MODE (auto cycles through floors)
- 2-STOP AUTO CYCLING (Car returns)

## DPI (DIGITAL POSITION INDICATOR) CHARACTER DISPLAY

- STANDARD: 1-2-3-4-5  OPTIONAL: B, G, L, M, 2, 3, 4 (SPECIFY)

## OTHER OPTIONS

- 1. \_\_\_\_\_ \$ \_\_\_\_\_
- 2. \_\_\_\_\_ \$ \_\_\_\_\_

# Options Guide



## GLASS OPTIONS



GLASS CAB



VISIFOLD GATE

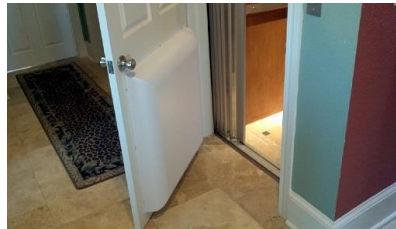


GLASS SLIDING DOORS



CUSTOM PAINTED MECHANICAL

## DOOR ACCESSORIES



DOOR BAFFLES



SWING DOOR OPERATOR

## WINDOWS AND MIRRORS



CAB WINDOW



RECESSED CAB MIRROR







# CAMBRIDGE

ELEVATING

181 Shearson Cres, Cambridge, ON N1T 1J3  
T 519-653-4222 | F 519-653-9927 | TOLL FREE 1-800-265-3579

[www.CambridgeElevating.com](http://www.CambridgeElevating.com)